

**KEEP FOR  
REFERENCE**



# **RESIDUAL MATERIALS MANAGEMENT GUIDE**

# Our collective challenge

2

Nadia Minasjian, Warden, MRC Rocher-Percé



**We are fortunate! Our community is a leader in waste management; this gives us all the easy and simple opportunity to contribute to the environmental cause, while reducing the costs of waste management for our municipalities.**

We all have the responsibility to sort our waste using the three bins provided: garbage (green bin), recycling (blue bin) and organic materials (brown bin). The team at the RITMRG handles the rest.

All human consumption has an impact on our society. Whether it's our food, hygiene, electronic products, etc., we owe it to ourselves to find solutions to reduce our waste by making intelligent and strategic choices.

Today, I propose that we all join together in a collective challenge. I am therefore announcing my personal family challenge: at home, we are going to reduce our use of single-use containers by choosing bulk and homemade products. What will you do?

Let's find simple and practical solutions that will have an effect on the amount of waste produced by each household. At the end of the year, everyone will be environmentally and financially grateful!

We can all do it ... one step at a time!

## A team who is dedicated to innovation!

**The Board of Directors of the RITMRG, recognized throughout Quebec for its creative and innovative approach, has demonstrated its commitment over the past 10 years by implementing, for example, composting, Eco-Centres and an innovative approach to the recycling of glass.**

Can we dream of "zero waste"? Perhaps not for tomorrow, but we aim to achieve an equally ambitious goal ... to do better!

To reduce waste, cut costs, reduce the environmental impact, reduce the use of raw materials, reduce the impact on greenhouse gases and increase our sense of pride, this is what motivates us each and every day!

Our team, made up of dedicated, creative and committed people, whom I respectfully acknowledge here, share their goals, suggestions and ideas with you in this guide. Take the time to browse through it, read it, question it, while keeping in mind the people who sort, evaluate and negotiate ... for you.

We are confident that by uniting our efforts collectively, we will all reap the benefits!

Nathalie Drapeau, general director, RITMRG



## Table of contents

The 4R-Ds.....	3	Recycling.....	10	Landfill.....	22
Sort your materials...it pays!..	4	Compost.....	14	Our innovations .....	26
A new bylaw .....	6	Eco-Centres .....	18		
Collection guidelines .....	8	Special collections .....	20		



# The 4 R-Ds

Given that our planet's resources are limited, it is inherently unsustainable to continually extract, process and dispose of raw materials.

In order to reduce pressure on the environment and to conserve our resources, we ask you to apply the 4 R-D principle, in the following order:



The best waste is no waste!


It is always better to reduce and reuse, before recycling, recovering or throwing an object away.



Make a commitment to reduce your waste by trying some of these helpful suggestions!

**Check (✓) the suggestions you already use, or get started, one step at a time!**

## I Reduce...

- ☐ I bring my reusable bags to the grocery store.
- ☐ I buy large formats or in bulk.
- ☐ I bring my mug and reusable cutlery with me.
- ☐ I don't use flyers or bags from the grocery store. 
- ☐ I borrow certain tools from friends and family instead of buying them.

## I Reuse...

- ☐ I buy, repair and donate my used clothing, furniture and electronics.
- ☐ I organize a clothing swap with my friends.
- ☐ I reuse my glass and plastic containers.
- ☐ I visit the Eco-Centre to find wood, windows and even furniture.

## I Recycle...

- ☐ I learn about materials that are accepted in the blue bin (see page 10).
- ☐ I use the Ça va où ? app when I'm not sure which bin to use.
- ☐ I choose recyclable and compostable packaging.
- ☐ I compost. Yes, composting is the recycling of organic matter!

## I Recover...

- ☐ I learn about the materials that are accepted at my local Eco-Centre (see page 18).
- ☐ I have a place to store items meant for the Eco-Centre until a trip is necessary.
- ☐ I ask my contractor to sort the waste from construction/renovation projects.

## I Dispose...

- ☐ Only real waste, things that cannot be recycled, composted or brought to the Eco-centre.
- ☐ As little as possible by reducing my consumption.

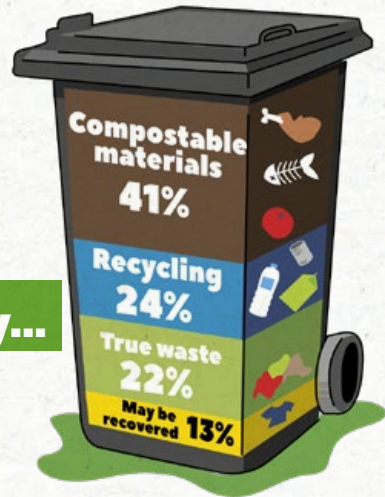
# Throwing our money ...in the garbage

## Did you know ?

- Each year, the City of Gaspé spends close to \$2,6 million on residual material management (RMM).
- Landfill use costs approximately twice as much as recycling and composting.
- Only 22% of the material in the garbage bin can be considered «actual waste». The other 78% can be recycled, composted and recovered.

## Sorting your materials correctly...

**it pays off for everyone.**



## A lot of work still ahead

In order to achieve our waste reduction goals, everyone must lend a helping hand: the public, businesses in the industrial, commercial and institutional sectors (ICI), as well as construction, renovation and demolition contractors (CRD).

At the provincial level, RECYC-QUÉBEC has identified a number of objectives in its action plan for 2019–2024, specifically to reduce landfill use and increase the recovery rate of recyclable and organic materials.

Despite the many efforts that have been undertaken (three-way curb collection, awareness campaigns, the creation of Eco-Centres), landfill use still has not significantly decreased. We therefore have a lot of work ahead of order to increase the volume of recycled, composted recovered materials.



# Objectives and results

5

Reduce to

**400 kg  
or less**

the quantity of waste generated  
per person annually

2019 results

**452 kg**

Recycle  
**75%**

of all paper, cardboard,  
glass, plastic and metals

2019 results

**57 %**

Compost  
**60%**

of all organic matter

2019 results

**42 %**

## Your role as a citizen

- Reduce your waste at the source;
- Participate actively in the collection of your brown and blue bins;
- Deposit your recyclable materials, such as construction or hazardous materials, at you Eco-Centre;
- Take out your garbage and blue bins only when they are full.

## Our role at the RITMRG

- Answer ALL your questions;
- Ensure access to all necessary resources;
- Provide the collection, transportation and processing of your materials

In 2019,  
**30%**  
of the population  
participated in  
composting.

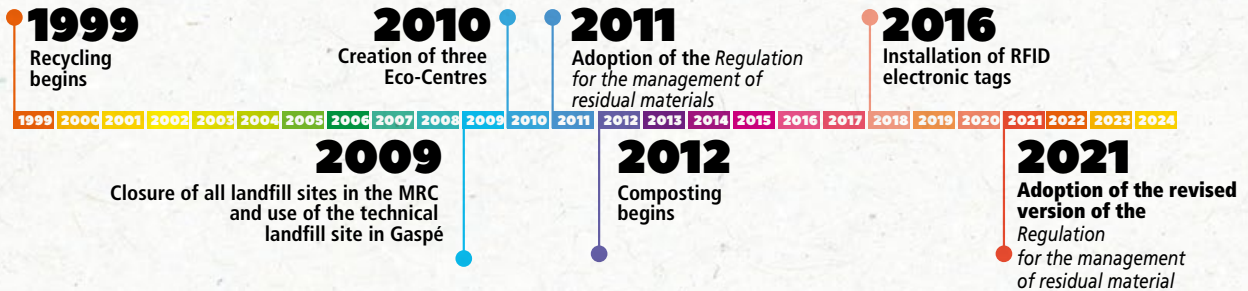
**We can  
do  
better!**

# A new bylaw to reduce landfill use!

## Why a new set of regulations?

In spite of all our best efforts, with the creation of new infrastructures and numerous awareness campaigns, 44% of all material generated in the MRC of Rocher-Percé is still sent to the landfill site.

Of this material, only 22% can be considered true waste. This means that in 2019, more than 900 tonnes of materials could have been recycled, composted or recovered instead!



The new regulations will help us to achieve our goals in:

- Reducing landfill use;
- Improving our services;
- Improving the quality of materials;
- Reducing costs.

The regulations clarify the roles and responsibilities of each individual, whether they are a resident, property owner or administrators.

To consult the new regulations, visit [ritmrg.ca](http://ritmrg.ca).






## #1 Participation is mandatory

All residents, ICI<sup>1</sup> establishments and multi-unit housing<sup>2</sup> are required to correctly sort their residual materials, by using curbside three-way collection and the Eco-centres. This means:

- Respecting the lists of accepted materials for each type of collection;
- Following the guidelines on how to compost, recycle and use the services at the Eco-centre, etc.;
- Respect the curbside collection guidelines;
- If you own an apartment building or an ICI<sup>1</sup>, ensure that your tenants respect the regulations, and provide them with the required bins.

## #2 The number and type of containers permitted

Occupancy type	Number of containers	Type of containers
Single dwelling residence	1 bin per category, per unit unless specifically authorized (240 L or 360 L wheeled bin)	
ICI	Wheeled bins for compost, recycling and garbage, or containers for compost and garbage	
Multi-unit housing <sup>2</sup>	Only one container per category <sup>3</sup>	

## #3 Painting of bins is prohibited

Painted bins will not be accepted for collection to avoid confusion by the operators... and your neighbors!

## #4 In case of damage

- If the operator damages your bin, you have 5 days to report the damage to the contractor.
- The bins are guaranteed for 10 years, after which repairs may be at your expense.

## #5 Electronic chips

All bins and containers must have an RFID chip, linked to the appropriate address. You must therefore notify the RITMRG if you are taking your bins to a new address, or if you purchase a new bin.

## #6 Illegal dumping

It is prohibited for you to throw anything into a bin or container that does not belong to you, or worse, out in the open!

## #7 Collection schedule

Your bin must be placed curbside no earlier than 4:00 PM the day before scheduled pick-up. The bin must be removed no later than 10:00 AM the day after the scheduled collection. See why on the next page.

## Will there be any fines?

In the event of non-compliance, we will prioritize the following sequence of intervention:

- 1) Courtesy notice
- 2) Written notice

In the event that the regulations are still not respected, individuals will be subject to fines.

### Definitions:

1. ICI: Industrial, commercial and institutional establishments
2. Multi-unit housing: Residential building with 2 or more units
3. Category: The three categories are composting, recycling, and disposal

# Collection guidelines

## Why follow these guidelines?

- To avoid forgetting to take out your bins for curbside pick up;
- To prevent damage;
- To help us to help you!

## What type of containers are allowed?

- 240 L or 360 L wheeled bins



Recycling



Trash



Compost

- **IMPORTANT:** Your bin must retain its original colour. Painted bins will not be accepted for curbside pickup!
- Other options are available for industrial, commercial or institutional establishments. Please call us for more information.



To view your collection schedule, please refer to the calendar which is distributed to your home each year, or visit **[www.ritmrg.ca](http://www.ritmrg.ca)**

## In winter

Place your bin at a distance of approximately 10 feet from the white line to prevent damage from the snowplow. In the event of a winter storm, collection may be delayed...

So leave your bin by the curb!

Write your street address on each of your bins.  
(This will help us to correctly identify them)

Take out your bin the day before scheduled pickup.

Why? Because the truck can pass as early as 6 a.m.

Leave a two-foot clearance around the bin  
(between a fence, a car or even another bin).

In order for the brown bin to be clearly visible to the operator, place it to the right of any other bin.

To find out how to proceed in case of damage, call us or visit our website [ritmrg.ca](http://ritmrg.ca) as soon as you notice the problem.

Ensure that no materials are sticking out or are on the ground next to the bin.

Placed at a maximum distance of 10 feet from the white pavement line, neither on the sidewalk nor on the street.

Wheels pointing towards the house.





# Frequently asked questions

## #1 Why put electronic chips on the bins?



The operator is authorized to refuse pickup.

At the RITMRG, we pride ourselves on being innovative as well as generating savings. We therefore deserve intelligent curbside pickup!

Electronic chips allow us to:

- Follow the truck on its rounds in real time;
- Know where and when your bins have been emptied by the operator;
- Calculate the participation rates for the curbside pickup;
- To eventually implement an incentive-based pricing policy.



9

## #2 What to do if my bin is damaged or if it hasn't been picked up?

Call the contractor as soon as you notice any damage or a missed pickup. Visit our website for the contact information.

- There are several reasons why your bin may not have been picked up:
  - Failure to comply with any of the instructions presented in this guide;
  - Presence of contaminants in your bin.



## #3 Where can I get a new bin?

- Garbage or recycling: at most hardware stores
- Compost: Call us!  
418-385-4200



### MEMENTO



#### Forgot to take out your bins? That is what Memento is for!

After subscribing to the service, you will receive a reminder by text the day before each collection.

For more information: [mmnto.ca/en/](http://mmnto.ca/en/).

## You're moving ?

You must notify us if you are moving into a new home, or if any bins will be relocated! We will then be able to assign your bins to the correct address.

## How to reach us?

**418-385-4200**

# Why

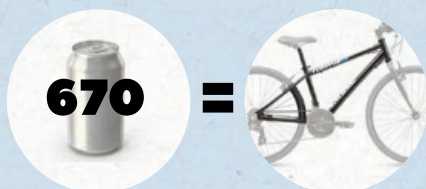
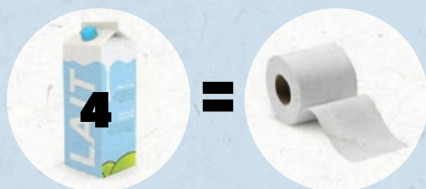
# recycle?



10

**24%** of what you put in the trash bin should have been recycled. Why not give a second life to these materials, and by doing so:

- Extend the life of the landfill site by reducing the amount of waste generated;
- Generate income from the sale of recycled materials, thus reducing the cost of waste management;
- Maintain over 15 jobs created at the material recovery and sorting facility in Grande-Rivière;
- Manufacture new goods from recycled materials, thus reducing our impact on the environment.



## Recycling

### Accepted materials

In general

Is it a **CONTAINER, PACKAGING** or a **PRINTED PUBLICATION**?

Is it made of **paper, cardboard, plastic, glass or metal**?

If so, it can likely be recycled!  
To be certain, see below!

Paper and cardboard

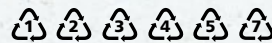


Newspapers, circulars, magazines, books, catalogues, phone-books, brown paper bags, white and coloured paper, envelopes, cardboard boxes, egg cartons, juice and milk cartons (Tetra Pak®), lottery tickets.

Plastic



All plastic containers featuring one of these symbol (except #6),



bags and transparant plastic wrappers (ex. Saran Wrap)

Glass



Wine, beer and liquor bottles, all glass containers.

Metal



Canned foods, aluminium foil and containers, lids, beer caps, cans.



## How to recycle?



- Remove corks, stoppers and lids;
- Empty and lightly rinse all containers.



- Separate the different materials:
  - Remove flyers from the PubliSAC;
  - Remove plastic packaging from the cardboard boxes.
- Break down the boxes;
- Place shredded paper in a clear bag;
- What is the best container for these materials?
  - If they are clean, the blue bin;
  - If they are soiled (food, grease, etc.), the brown bin.



See diagram  
on next page

- Soft plastic (bags and wrappers)
  - Place all materials in a clear plastic bag and tie securely.
- Hard plastic (containers)
  - 1 2 3 4 5 7 ~~6~~ ou ~~2~~
  - Remove corks, stoppers and lids;
  - Empty and lightly rinse all containers.



- Empty and lightly rinse all containers.

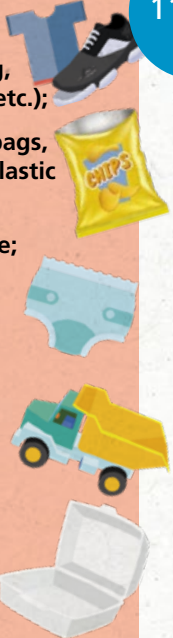


- Empty and lightly rinse all containers.

## Non recyclable

Here are a few examples of contaminants that are often sent to the sorting centre:

- Food;
- Textiles (clothing, carpets, sheets, etc.);
- Snack and chip bags, non-recyclable plastic packaging;
- Biomedical waste;
- Diapers;
- Long items (garden hose, electrical wire, etc.);
- Toys;
- Objects made with mixed materials;
- Styrofoam.



**Did you know?**

The Grande-Rivière material recovery and sorting facility has already received a boa constrictor, several moose carcasses and dog feces. If you would like to see everything that we receive at the sorting facility and better understand what we do on a daily basis, subscribe to our Facebook page. Put a little respect in your bin!



# Plastic

## How to know what can be recycled?

### Soft plastic (bags and wrapping)

Does it stretch?



YES

NO

Place all in a plastic transparent bag and tie it up.



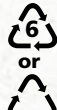
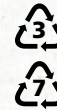
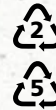
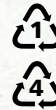
### Hard plastic (containers)

Does it feature one of these symbols?



YES

NO



Do you often wonder

«Where does this go?»

You're not sure whether that milk carton or those yogurt containers go into the recycling?

Use the Ça va où? mobile app from RECYC-QUÉBEC.

ÇA VA  
où?

DISPONIBLE SUR  
Google play

DISPONIBLE SUR  
App Store



# Myths about recycling

Myth  
#1

**Recyclable materials from the blue bin just end up in the trash.**

**FALSE!**

All your materials, if they are truly recyclable, will be sorted by our employees at the Grande-Rivière material recovery and sorting facility, then shipped to recyclers located primarily in Quebec. However, each year we receive 8% to 15% of contaminants that will have to be sent to landfill.

Myth  
#2

**Glass can't be recycled, and ends up in the landfill site.**

**FALSE!**

Since 2017, the *Innovative Glass Works* plan has allowed the Grande-Rivière material recovery and sorting facility to recycle 100% of all glass collected. This glass is transformed into an aggregate that can be used in landscaping, walking paths, as a street abrasive, etc. Are you planning to develop a landscaping or art project with glass?

Contact us for more information or visit our website at [ritmrg.ca](http://ritmrg.ca).



Myth  
#3

**In case of doubt, I use the blue bin. That's what the sorters are for!**

**FALSE!**

Sorters already have enough work separating the appropriate materials, they don't need to sort your trash as well! Furthermore, contaminants can cause equipment failure, interfere with operations and must be sent to the landfill site. Please inquire before placing any material you are not sure about in the blue bin or throw it in the trash.

Myth  
#4

**Rinsing the containers wastes too much water.**

**FALSE!**

The amount of water you will use to rinse your container is negligible compared to the amount needed to produce a new one.

Myth  
#5

**Cans placed in the blue bin are not recycled**

**FALSE!**

All cans and other refundable containers are sorted, sold and recycled. The return deposit collected is used by the RITMRG to help reducing operating costs, thereby reducing your tax!



# Compost

## Why use

### the brown bin?

Since 2012, the MRC of Rocher-Percé has implemented curbside compost collection.

We have observed that only 30% of residents compost. Residents and businesses alike all have a role to play. We can do better!

Starting in 2021, all taxpayers will be required to sort their materials, thus participating in the collection of organic materials.

## How to use the brown bin

Are you reluctant to compost? You have been composting but it's not going the way you'd like? Try the tips and suggestions on the following pages to help you become a composting pro!

## Composting, it's not rocket science!

Start gradually, beginning with vegetable peels, bruised fruit, eggshells and green waste. Once you are comfortable with these materials, continue with meat, fish and seafood.

## Follow the lead and compost!



- To reduce property taxes;



- To protect the environment by reducing landfill waste and greenhouse gases;



- To produce a quality compost locally.

*The equivalent of 8000 tonnes CO<sub>2</sub> is prevented from entering the atmosphere by your use of the brown bin.*

**\*1 tonne CO<sub>2</sub> =  
a road trip from Montreal  
to Vancouver**

**Did  
you  
know?**

We have produced several video clips with tips for composting. Check out the "capsules vidéo" section of our website at [ritmrg.ca](http://ritmrg.ca)!





## How to keep the bin clean and prevent materials from sticking to it in winter?

## How to avoid bad odours, flies and worms?

Avoid placing liquids in the bin.



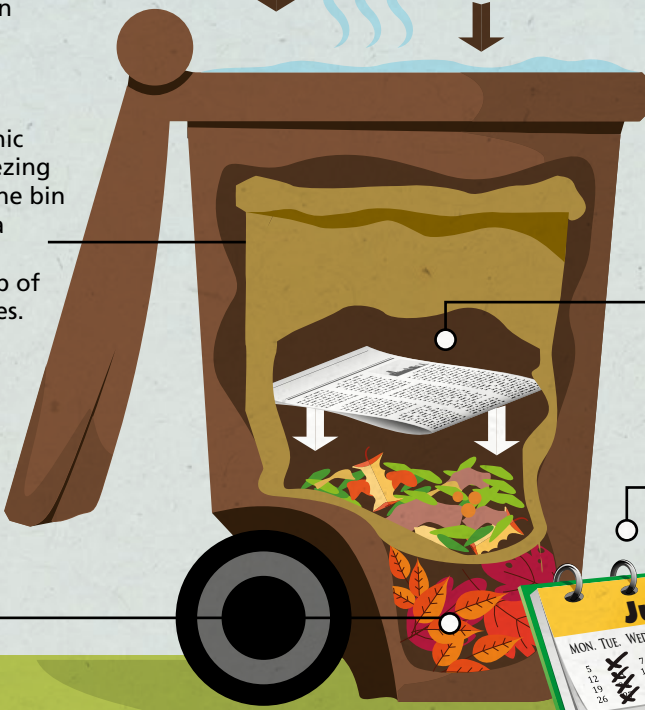
Place organic matter in a paper bag.



Apply a menthol based ointment (eg. Vicks) around the rim of the bin to keep animals away.

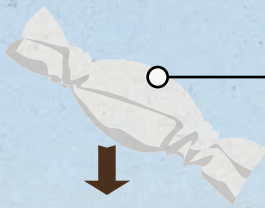


To prevent organic matter from freezing and sticking to the bin in winter, place a large paper yard waste bag on top of the layer of leaves.



Place a layer of dead leaves or paper/cardboard at the bottom of the bin.

Wrap meat, fish and seafood in newspaper before placing it in the bin.



If maggots still get into your bin, sprinkle baking soda into it or spray with vinegar.



Freeze foul-smelling organic waste and place it in the bin the night before collection day.



Store your bin in the shade.

Cover kitchen scraps with dry matter (green waste, newspapers, etc.).



Take out your bin on every scheduled collection day in the summer.



## Accepted Materials

**What can be put in the bin? Food scraps, green waste and soiled paper/cardboard products are all accepted in the brown bin!**

### Food waste



Fruits and vegetables, table scraps, meat and poultry (including bones and fat), fish (including fish bones and fat), seafood (including shells), bread, pasta and other grain products, eggs and shells, milk products, nut shells, desserts and other sweets, coffee (grounds or beans and filters), tea bags, pet food.

### Green waste



Dead leaves, grass cuttings, weeds, hay, turf, plants, flowers, small branches and hedge clippings (maximum of one inch in diameter, and the bin cover must be able to close), wood chips and sawdust, sand and dirt

### Other organic materials



Paper towels, napkins and paper tissues, newspaper, soiled paper and cardboard products (pizza boxes, muffin baking cups, placemats, parchment paper, etc.), compostable tableware (cutlery, food trays, compostable plastics, etc.), all types of animal litter (loose or in a paper bag).



**YES!** Paper tissues, as well as paper towels and animal litter, are indeed accepted, since all harmful micro-organisms, such as viruses, are destroyed by the composting process.

## Materials not accepted

- Plastic bags (including compostable or biodegradable bags)
- Diapers and sanitary products
- Packaging and containers made of glass, plastic or metal
- Clothing and fabrics

**NO GLASS, PLASTIC OR METAL**



Each year, the composting site receives **approximately 55 tonnes of contaminants** that should not have been placed in the brown bins, including plastic, glass and metal.

These materials must be removed manually by employees at the composting site, which requires a significant amount of time and work.

**55 tonnes**  
of contaminants  
per year

=

**14 x**





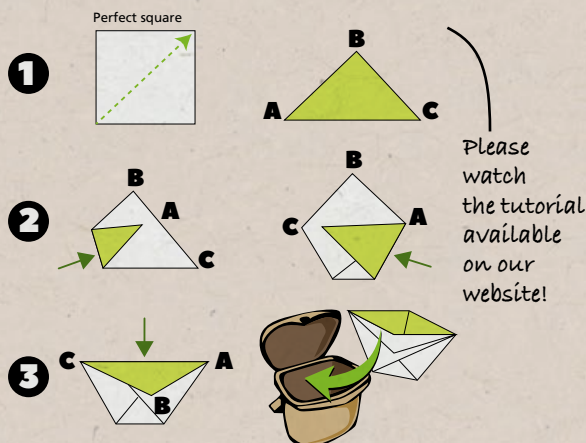
# Frequently asked questions

## What type of bag can I use?

Compostable plastic bags are NOT accepted in the brown bins. To collect your organic waste, consider using :

- Paper bags
- Paper bags with a leak-proof lining (e.g. Bag to Earth)
- Newspapers

Here's how to fold your newspaper to make the perfect bag for your countertop composter!



## Can I purchase the compost?

The compost produced at the Chandler composting site is available for sale in both bulk and 30-litre bags. Two types of compost are produced:

- Urban compost produced from residential and commercial organic waste;
- Marine compost produced from organic waste sourced from seafood processing plants.

To learn more about points of sale and availability, visit our website at [ritmrg.ca](http://ritmrg.ca).

## Can I use the compost from the RITMRG in my garden?

Absolutely! This is a category A1 compost. Before being sold, each lot is sampled and tested in a laboratory to ensure its quality. You will find quality analysis information and instructions for use on our website.

## Take it to the next level. Try Grasscycling!

Leaving lawn clippings on the ground is good for your lawn! In addition to producing a natural fertilizer, it protects your lawn from drought, helps develop its natural resistance to disease and reduces the need for maintenance, all while saving you time!

## Try Leafcycling

Use your lawnmower to mulch your leaves in the fall and feed your lawn all winter. This can also be used in your garden and flower beds!

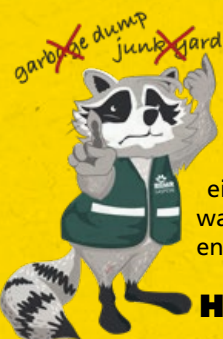
**Did you know?**

**41%** of waste we produce at home can be composted!



# Eco-Centres

## Why use an Eco-centre?



Wrongly called a *garbage dump* or *junk yard*, the Eco-centre is an important facility used for diverting a significant amount of materials from landfill. These materials can either be recycled or managed in a way that is safe for our health and the environment.

## How to proceed?

- Before visiting the Eco-centre, have your materials separated into their respective categories;
- Have proof of residence on hand;
- For Household Hazardous Waste (HHW):
  - Dispose of materials in their original containers, clearly identified and tightly sealed;
  - Do not mix different products together;
  - Never throw products in the garbage or down the drain.

## Some examples of recovered materials

- 1) Unsound wood and asphalt shingles are crushed to be used as cover material at the landfill site. As a result, materials that have very little market value are used in place of soil or gravel.
- 2) Branches will be processed into wood chips and integrated into the compost site.
- 3) Used oil, paint and tires are transformed into new materials by specialized businesses.
- 4) Drywall is integrated into the production of a building material developed in the Gaspésie region, or recovered as an agricultural soil conditioner.

We are always looking for better methods to recover these materials.

## Materials accepted free of charge

Several materials are accepted free of charge and with no limits on quantity (see **Table A** opposite). Simply dispose of the materials at the designated location as directed by the facility staff.

## The first 150 cubic feet free of charge

For residential construction, renovation, and demolition waste (RDC) (see **Table B** opposite) residents can bring up to 150 cubic feet of material per address per year at no charge. In excess of this amount, materials will be subject to a fee (visit [ritmrg.ca](http://ritmrg.ca) for rates). Commercial clients will be charged beginning from the first load.

## Materials subject to a fee

Certain materials are subject to a fee at all times, such as fishing gear, tires with rims and garbage (see **Table C** opposite).

## Unsorted materials

You do not have time to sort your materials at the Eco-centre?

No problem!

- Our employees will sort your materials.
- A fee for unsorted materials will be applied.

## Residential renovation work carried out by a contractor

If you are having your home renovated by a contractor, fill out a proxy to obtain from your residential exemption. You will find on our website [ritmrg.ca](http://ritmrg.ca) in the Eco-centres section.



We still find **12%** of recoverable materials in residential garbage bins.




# Time schedule and locations

Eco-centre	From May 1 <sup>st</sup> to October 31	From November 1 <sup>st</sup> to April 30
Gascons 232, route Morin Nord	Tuesday, Thursday and Saturday <b>8:00 a.m. to 5 p.m.</b>	Tuesday and Saturday <b>8:00 a.m. to 4 p.m.</b>
Grande Rivière 785, Rue St-Pierre	Monday to Saturday <b>8:00 a.m. to 5 p.m.</b>	Monday, Wednesday, Friday and Saturday <b>9:00 a.m. to 4 p.m.</b>
Percé 50, route Lemieux	Monday, Wednesday, Saturday <b>8:00 a.m. to 5 p.m.</b>	Wednesday and Saturday <b>8:00 a.m. to 4 p.m.</b>


The Eco-centre is closed on public holidays.

## Accepted materials


### Free of charge (Table A)




**Green Waste**  
Branches, bags of leaves (paper, transparent or orange bags)



**Metals**  
Scrap metals (ferrous and non-ferrous)




**Household Hazardous Waste (HHW)\***  
Batteries, vehicle batteries, compact fluorescent bulbs and tubes, paints, primers, paint thinners, uncontaminated frying oil or motor oil and empty containers.




**End-of-life electronics\***  
Televisions, computers, keyboards, display monitors, photocopiers, cell phones, chargers, etc.



**Tires**  
Tires with a maximum size of 48 inches, **without rims**



**Recyclable materials**  
Occasional surplus items



**Oversized materials**  
Large appliances, tubs, sinks, toilettes, furniture, mattresses, box springs, large toys, bicycles, rugs and other floor coverings, water heaters, ferrous and non-ferrous metals, etc.

### 150 ft<sup>3</sup> materials free of charge (Table B)



**Construction, renovation and demolition waste (CRD)**  
Asphalt shingles, drywall, vinyl siding, insulation, aggregate waste (concrete, brick, asphalt, stone), windows, sound wood (pallets, branches, untreated wood), unsound wood (painted, stained, treated), etc.


### Materials subject to a fee (Table C)



**Aggregate waste**  
Concrete, brick and stone  
Call us at 385-4200




**Fishing materials, lobster cages**



**Tires**  
Tires with a maximum size of 48 inches, **with rims**



**Plastic bags of household garbage**



**Unsorted materials**  
Loads deposited as is, sorted by a facility employee.

**Prohibited materials**

**All materials containing asbestos**  
**Contaminated soil**  
Contact your nearest Eco-Centre to learn how to safely dispose of these materials.

\*Consultez le [ritmrg.ca](http://ritmrg.ca) pour le détail des matières acceptées.

# Special collections

20

## Oversized materials

### How does it work?

#### The reason for this collection

The collection of large, bulky items each spring allows residents to get rid of materials that are too big for the bins, free of charge. The commercial sector can use the Eco-Centre.

#### How to dispose of my oversized materials?

- Take your items out a maximum of 24 hours beforehand.
- Ensure that they are easily accessible and not placed on the street. This means:
  - In your driveway
  - At a maximum distance of two metres from the street
  - Easily accessible (not behind a ditch)
- Separate tires, metals from the rest of the materials.



*Why? Because they will be gathered separately to be recovered at the Eco-Centre*



### Attention!

*This collection is only for the residential sector.*

## Green waste (on request)

#### Dead leaves (in bags), branches and other green waste in large quantities.

- Call us before November 5 at 418-385-4200;
- follow the same guidelines as for the collection of oversized materials.

#### Types of bags accepted for dead leaves and garden waste:

- Paper bags;
- Orange or transparent plastic bags.

#### Branches must be:

- attached in bundles weighing a maximum of 25 kg;
- measure a maximum length of 3 feet with a 1 inch diameter.

## HHW Collection days

You will find the HHW dates the calendar and on our website [ritmrg.ca](http://ritmrg.ca).



## These materials are accepted at the Eco-Centre all year long!

### Accepted materials

Objects must respect the following requirements:

- Maximum length of 7 feet;
- Maximum volume of 3 m<sup>3</sup>;
- Maximum weight of 150 kg

#### Oversized Materials



- Large appliances, heaters and air conditioners;
- Bathtubs, sinks, toilettes;
- Furniture, mattresses and box springs;
- Large toys, bicycles;
- Rugs and floor coverings;
- Cardboard and other recyclable materials placed in a transparent bag
- Doors and windows
- Wooden pallets

Visit our website [ritmrg.ca](http://ritmrg.ca) for a complete list of items accepted for the oversized collection.

#### Metals

- Ferrous and non-ferrous metals;
- Water tanks and heaters.



#### Tires

- Tires with a maximum size of 48 inches, **without rims**



### Not accepted

- Household garbage;
- Construction, renovation or demolition waste (lumber, drywall, asphalt shingles, fibreglass, etc.);
- Concrete, brick, stone and asphalt;
- Logs and stumps;
- Household Hazardous Waste (HHW).
- End-of-life electronics
- Pickup truck caps
- Lobster traps

#### Branches of evergreen and deciduous trees

(see dimensions on previous page)

#### Dead leaves

(see accepted bags on previous page)

#### Grass cuttings

#### Garden waste



**60% oversized materials** collected are recovered, not sent to landfill.

For a complete list of accepted materials, please refer to the sections on Household Hazardous Waste (HHW) and End-of-life electronics on page 19.





# Landfill:

## The black sheep of residual material management

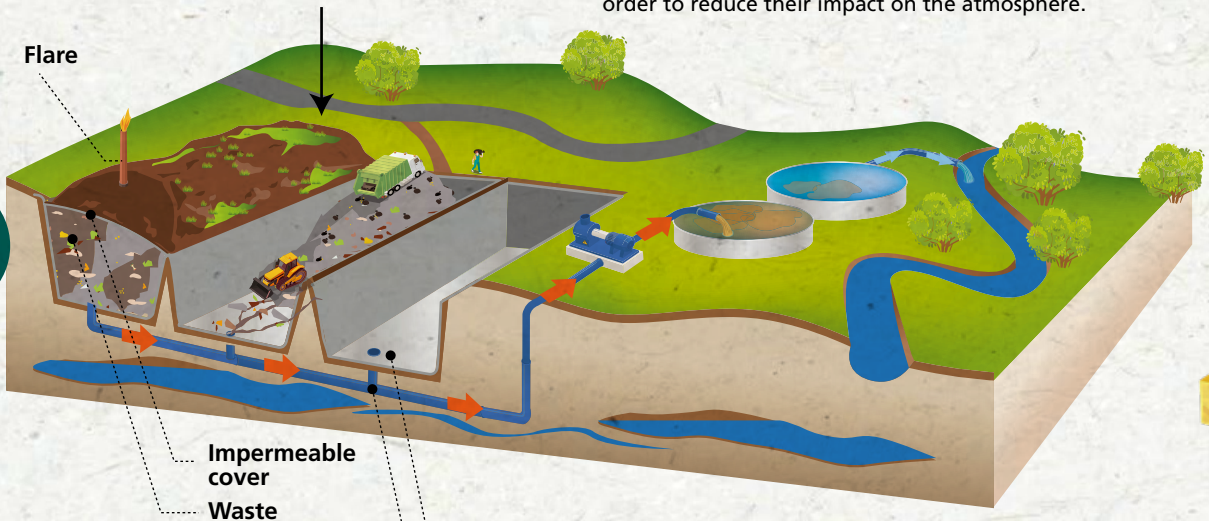
### Why does it cost so much?

A technical landfill site is like a large watertight swimming pool. Every five years, two large landfill cells (two large pits) are built, at a cost of \$2.5 million, to accommodate the 20,000 tonnes of waste received each year (about 1000 truckloads).

**In order to protect the environment, it is necessary to...**

### ...manage the gases produced

Biogases are produced by the decomposition of buried organic matter. They are then captured and burned in order to reduce their impact on the atmosphere.



### ...manage the water

**Water resistant geomembrane:** an impermeable membrane lines the bottom to prevent liquids from leaching into the ground.

#### Drainage of water into treatment basins

These liquids are treated to remove contaminants. They are then analyzed to confirm that they meet a series of strict standards and requirements before being released into the river.

**Did you know?**

The equivalent of eight Olympic swimming pools of contaminated water is treated each year.

By avoiding placing compostable materials, HHW and end-of-life electronics in the garbage in your garbage, we can reduce these treatment costs!



## Expensive equipment and facilities, high operating costs...How to help reduce these costs?

By properly sorting your waste! True waste accounts for only 22% of all material sent to the landfill site<sup>1</sup>. The remaining material can be placed in the brown or blue bins.

<sup>1</sup> According to a study carried out in 2015 at the Gaspé landfill site (for the residential sector).

Only  
**22%**

of material found in your garbage bin can be considered «true waste».



## So what is considered “true waste”?

### Non-recyclable plastics



No. 6 plastics (styrofoam, coffee lids, etc.), packaging with no recycling codes, individual-serving yogurt containers, plastic utensils, straws, coffee stir sticks, non-stretch wrapping, tape, stickers.

### Mixed material packaging



Potato chip and snack bags, laminated bags (several layers of plastic, aluminum or cardboard), metallized plastics (snack bars, chocolate), gum wrappers.

### Non-reusable fabrics



All fabrics that are too worn to be donated to a thrift store or other type of community organization should be disposed of in the garbage.

### Personal hygiene products



Diapers, sanitary napkins and tampons, makeup removers and baby wipers, dental floss, toothbrushes

### Other



Hair, vacuum cleaner dust, dryer lint, cigarette butts, ceramics, incandescent light bulbs.

## Materials not accepted

All materials accepted in the brown and blue bins are NOT ACCEPTED in your garbage bin. You must sort your items to make sure that you only have “true waste” in the bin.





# Materials that don't belong in the garbage



## Frequently asked questions



### Garbage or compost, isn't it all the same?

Not at all. Unlike composting, when you put a banana peel in the garbage, it decomposes very slowly and produces methane gas. Furthermore, it costs more to process and does not produce any compost.

*Pssst ... the new city bylaw requires you to sort your waste materials...*



### Is it possible to request another garbage bin?

By actively participating in composting and recycling, you are unlikely to need a second garbage bin. The majority of household waste is compostable or recyclable. However, if a second bin proves to be necessary, it is possible that your tax bill may be increased. Contact us for more information.

### Are we sending less to the landfill?

In the MRC Rocher-Percé, landfill use has decreased by 37% from 2009 to 2019, mainly due to the construction of the Eco-Centres in 2010, and the implementation of the brown bins in 2012. However, we are still sending over 8 000 tonnes of waste to landfill each year.

A lot of effort is still needed to further reduce landfill use.



# Takin out the garbage once a year, a legend?

You may be wondering what looks like the contents of the garbage bin of someone who respects the guidelines and suggestions presented in this guide, not a model individual, but someone who:

1. Considers their choices as a consumer in order to reduce waste at the source.
2. Learns how to correctly sort materials that can be recycled, composted and recovered, throwing away only "real waste".

**We tested this for you and the results were amazing:**



**Did you know?**

Only **38%** of households wait until their garbage bin is full before taking it out. Taking out your recycling and garbage bins only when they are full helps reduce operation costs and the production of greenhouse gases. It is a different matter for the brown bin; take it out regularly.

## More specifically, the garbage bin contained:



**What if we all accepted this challenge together?**

Share your experiences and suggestions on our Facebook page or by email.

# Our innovations

At the RITMRG, the spirit of innovation is at the forefront of our decision-making. For the past several years, we have undertaken a number of projects that have made you and us all leaders in the field of residual material management in Quebec.

## Good things come in threes

In 2012, the MRC du Rocher-Percé was the first municipal organization on the Gaspé Peninsula to have implemented three-way collection (recycling, compost and waste).

In 2018, the City of Gaspé followed suit by adding door-to-door compost collection (the brown bin). This service is not only offered to the residential sector, but to the industrial sector as well. This provides us with even more materials which can be composted.



## Intelligent waste collection using electronic chips!

The City of Gaspé and the MRC du Rocher-Percé are among the few municipalities in North America to have implemented the use of electronic chips. The purpose of these chips is to improve the monitoring of collection operations and respond more quickly to citizens. Please refer to page 9 to learn more about electronic chips!



## Willow trees to the rescue!



During the composting process, an impressive amount of liquid, called compost water, must be treated. Up until 2017, approximately 230 tanker trucks transported this liquid from the composting site to the Chandler wastewater treatment plant.

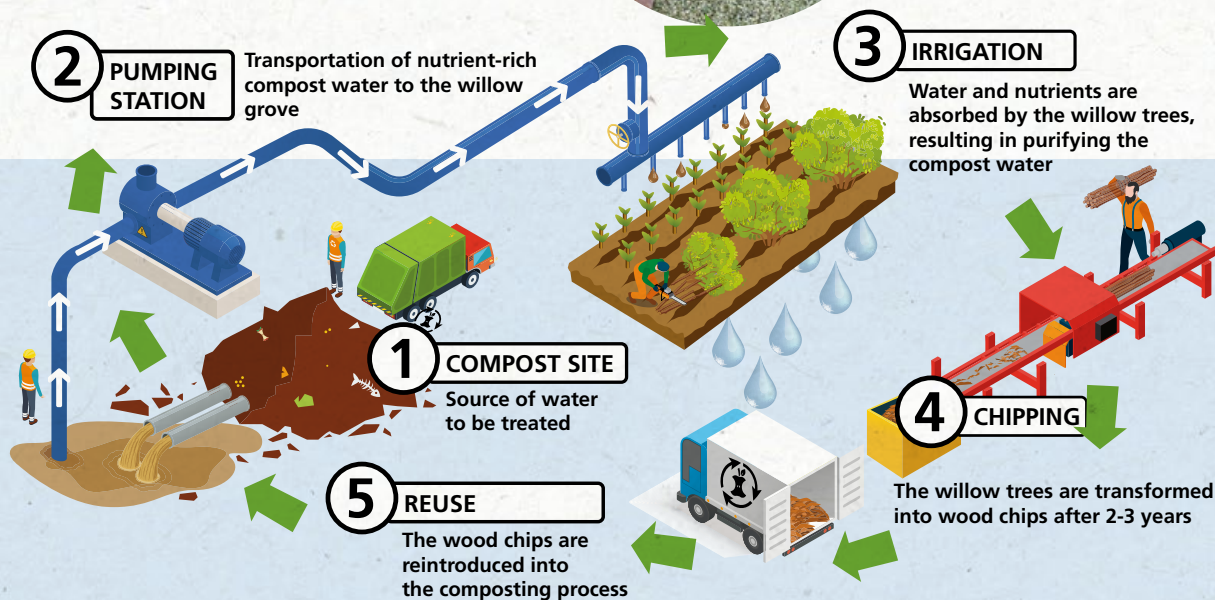
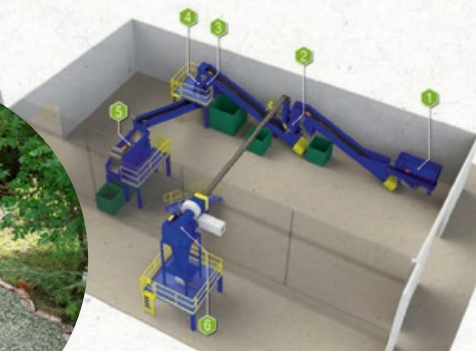
Since in 2019, compost water is pumped from the composting site to the former Chandler sanitary landfill site, where a grove of willows has been planted. The willows will feed on the nutrient-rich compost water and purify it. After two to or three years of growth, the willows will be converted into wood chips and reintegrated into the composting process. This innovative project makes it possible to reduce the cost of water treatment, **to recover a degraded site and to reuse the available nutrients. Furthermore, it enables us to obtain a supply of wood chips.** ➡



# VERRE L'INNOVATION

Glass recycling poses certain challenges in a number of regions of Quebec, primarily due to the lack of markets for glass recovered from the blue bins. In 2016, Éco Entreprises Québec (ÉEQ) and RECYC-QUÉBEC supported the «Innovative Glass Works» plan. This allowed the RITMRG to acquire new equipment capable of transforming glass into an aggregate for local and regional recycling. The Grande-Rivière sorting center has since been recovering, transforming and selling nearly 400 tonnes of glass aggregates a year. This glass product can be used in landscaping, as a road abrasive and much more.

Visit [www.ritmrg.ca](http://www.ritmrg.ca) for details and examples of innovative projects that have used our locally produced recycled glass.





Visit our website

**RITMRG.ca**

for our video clips and all other  
useful information.

Like our Facebook page to receive the latest  
information on residual waste management  
in your area!



**RITMRG**

*You still have questions  
after having read the guide?  
Call us at  
418 385-4200*



**RITMR**  
**GASPÉSIE**

Régie intermunicipale  
de traitement des matières  
résiduelles de la Gaspésie

498, La Grande-Allée Ouest  
Grande-Rivière Ouest (Québec) G0C 1W0  
l.gelinas@ritmrg.com  
www.ritmrg.ca



Papier 100% recyclé  
à partir de fibres  
postconsommation

**PCF**

**BIOGAZ**  
ÉNERGIE



PERMANENT